



Mersey River

© 2008 MapData Sciences PtyLtd, PSMA  
© 2009 Cnes/Spot Image

Google

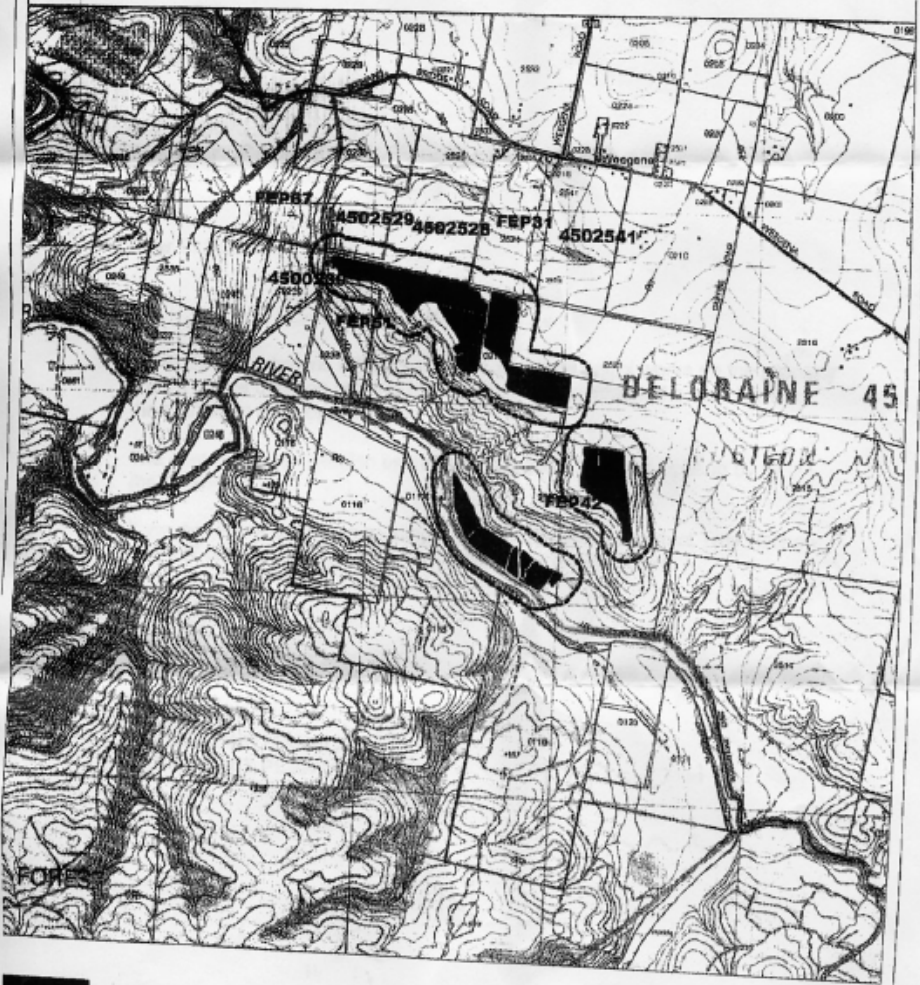
41°28'50.50" S 146°28'41.59" E

elev 103 m

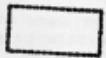
Eye alt 1.78 km

**Gunns Limited**  
**Neighbour Notification Map**  
*NFI Weegen - SQ162c*

Scale 1:25 000



Plantation Area



Dotted Line denotes  
Neighbour Notification Distance



Neighbour View

**POISON**  
**KEEP OUT OF REACH OF CHILDREN**  
**READ SAFETY DIRECTIONS BEFORE OPENING OR USING**

CROP CARE

**DOMINEX<sup>®</sup> DUO**  
**INSECTICIDE**

ACTIVE CONSTITUENT: 100 g/L ALPHA-CYPERMETHRIN  
SOLVENT: 741.9 g/L LIQUID HYDROCARBON

**GROUP**

**3A**

**INSECTICIDE**

Controls insect pests of Cereals, Cotton, Grain Legumes, Oilseeds, Pastures,  
Pome and Stone Fruits, Rice, Trees & Ornamentals, Tobacco & Vegetables as  
specified in the Directions For Use Table

### **PROTECTION OF LIVESTOCK**

Dangerous to bees. DO NOT spray on any plants in flower while bees are foraging. Crop Care Dominex Duo is known to have a deterrent effect on foraging bees for a short period of time after spraying. Risk to bees is reduced by spraying in early morning and late evening while bees are not foraging.

### **PROTECTION OF WILDLIFE , FISH, CRUSTACEANS AND ENVIRONMENT**

Dangerous to fish and aquatic invertebrates such as yabbies. Do NOT contaminate streams, rivers or waterways with chemical or used containers. Water from treated rice fields must not be released off-farm until the retention period specified by local irrigation authorities has been met. DO NOT apply or allow spray drift onto adjacent non-target aquatic areas. Allow sufficient buffer distance between downwind non-target water bodies and the sprayed area. Runoff from areas must be prevented from entering drains or waterways.

-----





Mersey River



# Riparian Vegetation on Mersey River





# Material Safety Data Sheet

Page: 1 of 3

Infosafe No. NU04B Issue Date : April 2004 ISSUED by NUFARM

Product Name : Spraymate BOND Adjuvant

Not classified as hazardous according to criteria of NOHSC

## 1. IDENTIFICATION OF THE SUBSTANCE/PREPARATION AND COMPANY

**Product Name** Spraymate BOND Adjuvant  
**Product Code** 3345  
**Product Use** Bond is a true sticker, extender providing superior sticking abilities and extending the life of your agricultural chemical and helps regulate droplet size and reduce drift, allowing a uniform spray pattern.  
**Company Name** NUFARM AUSTRALIA LIMITED. (ABN 80 004 377 780)  
**Address** 103-105 Pipe Road Laverton North  
Victoria 3026 Australia  
**Emergency Tel.** 24hr 1800 033 498  
**Telephone/Telex Number** Tel: (03) 9282-1000 Fax: (03) 9282-1001  
**Other Information** This MSDS describes, to the best of our knowledge, the properties of the concentrated product. The physical properties and some of the assessments do not apply to the properties of the product once it has been diluted for application. Acute health effects of the diluted product are likely to be much less severe.

Not classified as hazardous according to criteria of NOHSC

## 12. ECOLOGICAL INFORMATION

**Other Precautions** Do not contaminate dams, waterways or sewers with this product.  
**Environ. Protection** Harmful to fish.  
Do not contaminate ponds, waterways or ditches with chemical or used containers. Wash out containers thoroughly and dispose of in a responsible manner.  
**Acute Toxicity - Fish** Harmful to fish. LC50 (96hr) for guppy is 12.7 mg/l.  
**Acute Toxicity - Daphnia** EC50 (24 hrs): 5.2 mg/l



# Forest Practices Code 2000

## **E2. Use of Chemicals**

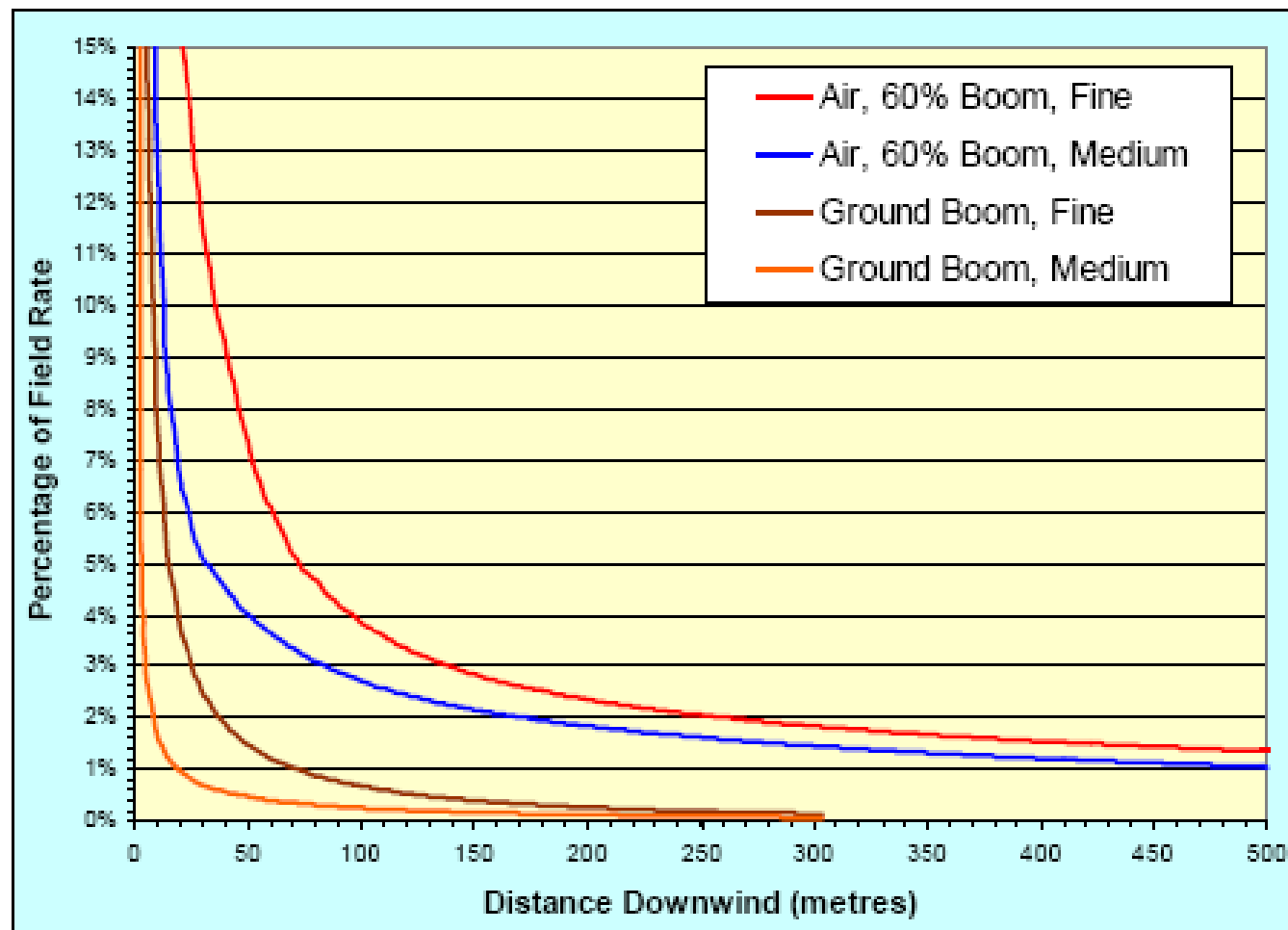
### General Principles

- It is the forest owners responsibility to protect people, water resources, karst systems, and stock during the application of chemicals by ensuring appropriate guidelines and instructions are followed. The use of chemicals will not prejudice the achievement of the water quality objectives as determined under the State Policy on Water Quality Management.
- Any person proposing to use chemicals to control pests (including weeds) in watercourses or along streambanks should first investigate, and wherever practical, use non-chemical means of control unless it can be demonstrated that chemical control poses a lesser environmental risk than other practical options. Where chemicals are used, chemicals specifically designed for streamside application e.g. Roundup Bioactive should be preferred.

Mersey River



Figure 1 — Example of Spray Drift Deposit Profiles from Computer Modelling



On this graph, zero on the horizontal axis represents the downwind edge of the application area. The wind is blowing from left to right. The vertical axis is scaled in percent of the intended field application rate. For example, the top curve (red) shows that approximately 4% of the intended field rate is deposited at a distance 100 metres downwind from the downwind end of the application area.

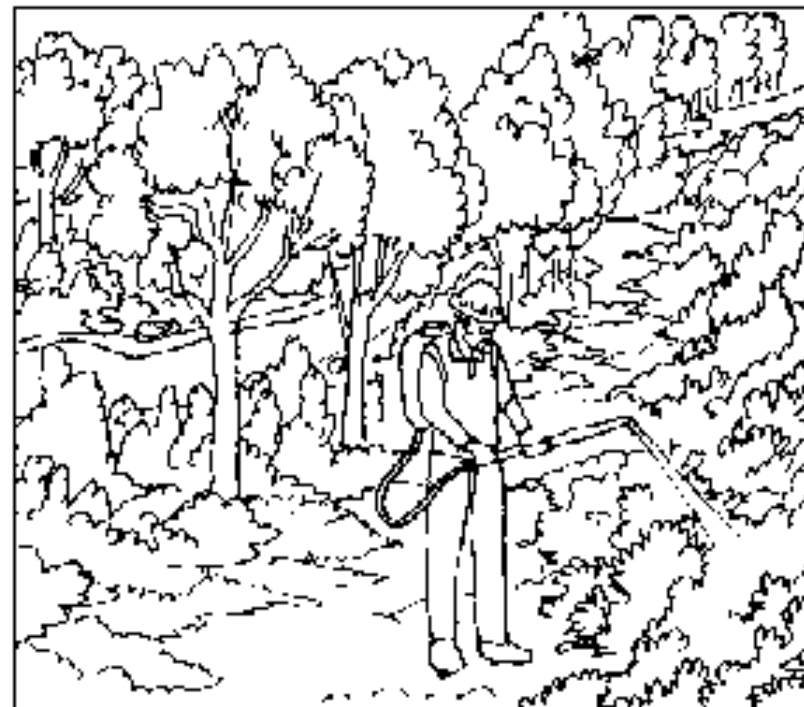
Mersey River



Mersey River

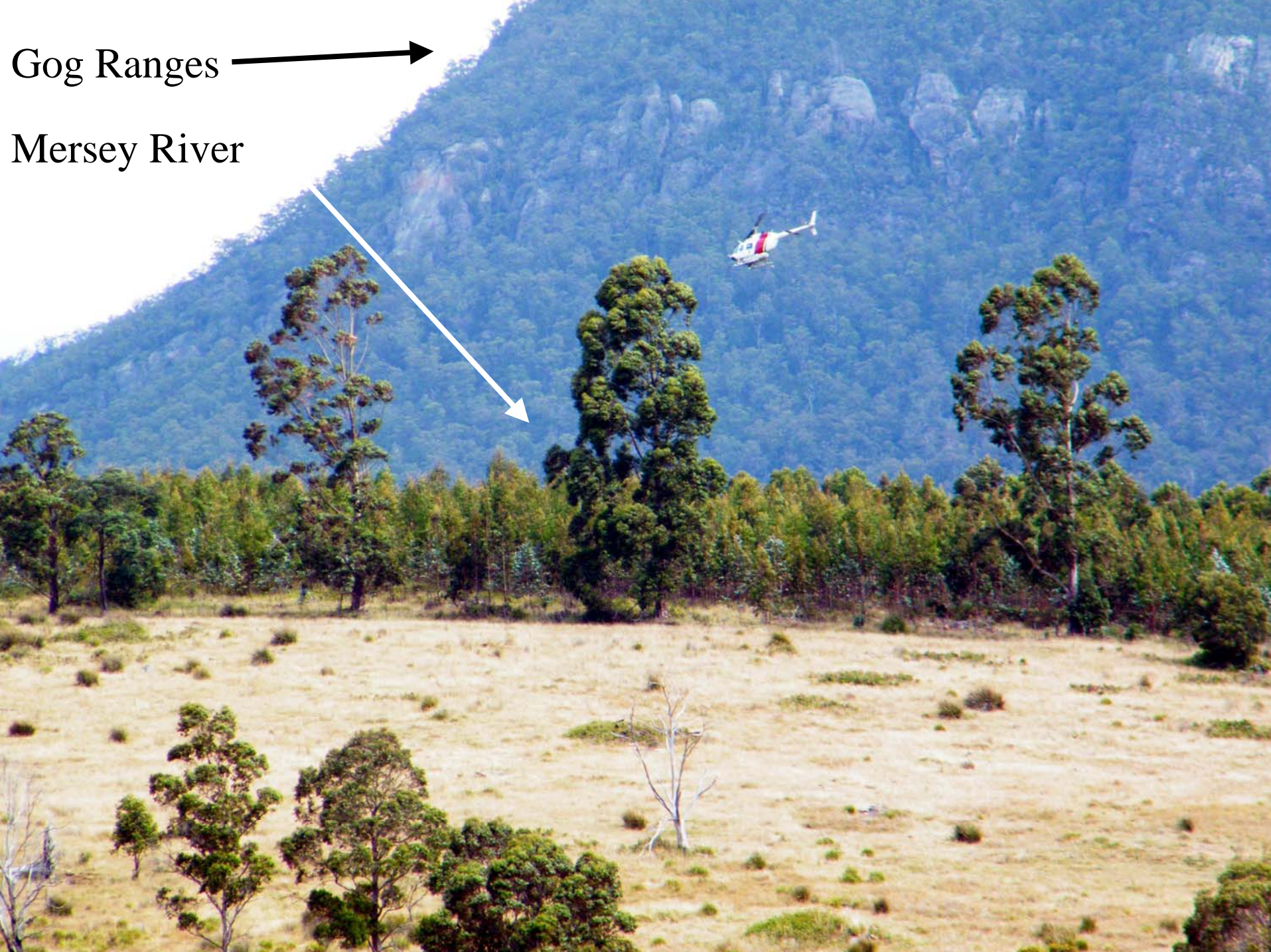


- The person responsible for chemical application will ensure that chemicals do not enter waterbodies, unless the chemicals are specifically approved for direct application to waterbodies. Techniques such as wick-wiping and spot or shrouded strip application should be considered next to watercourses.
- Aerial spraying should not be conducted when there is a risk of drift into streamside reserves. Boundaries of reserves should be clearly visible or marked or delineated during operations by electronic means.



Gog Ranges →

Mersey River ↘



## PAN Pesticides Database - Chemicals

[Home](#) > [Chemical Search](#)

[Help](#) | [Feedback](#)

**Cypermethrin, alpha** - Identification, toxicity, use, water pollution potential, ecological toxicity and regulatory information

### Signs and Symptoms of Cypermethrin, alpha Poisoning

[Top](#) ↑



**NOTE!** There may be other diseases and chemicals that have similar symptoms.



If you have a poisoning emergency in the United States call 1-800-222-1222.

If the victim has collapsed or is unconscious, call 911.

**Cypermethrin, alpha is a Pyrethroid compound.**

[Report a Poisoning](#)

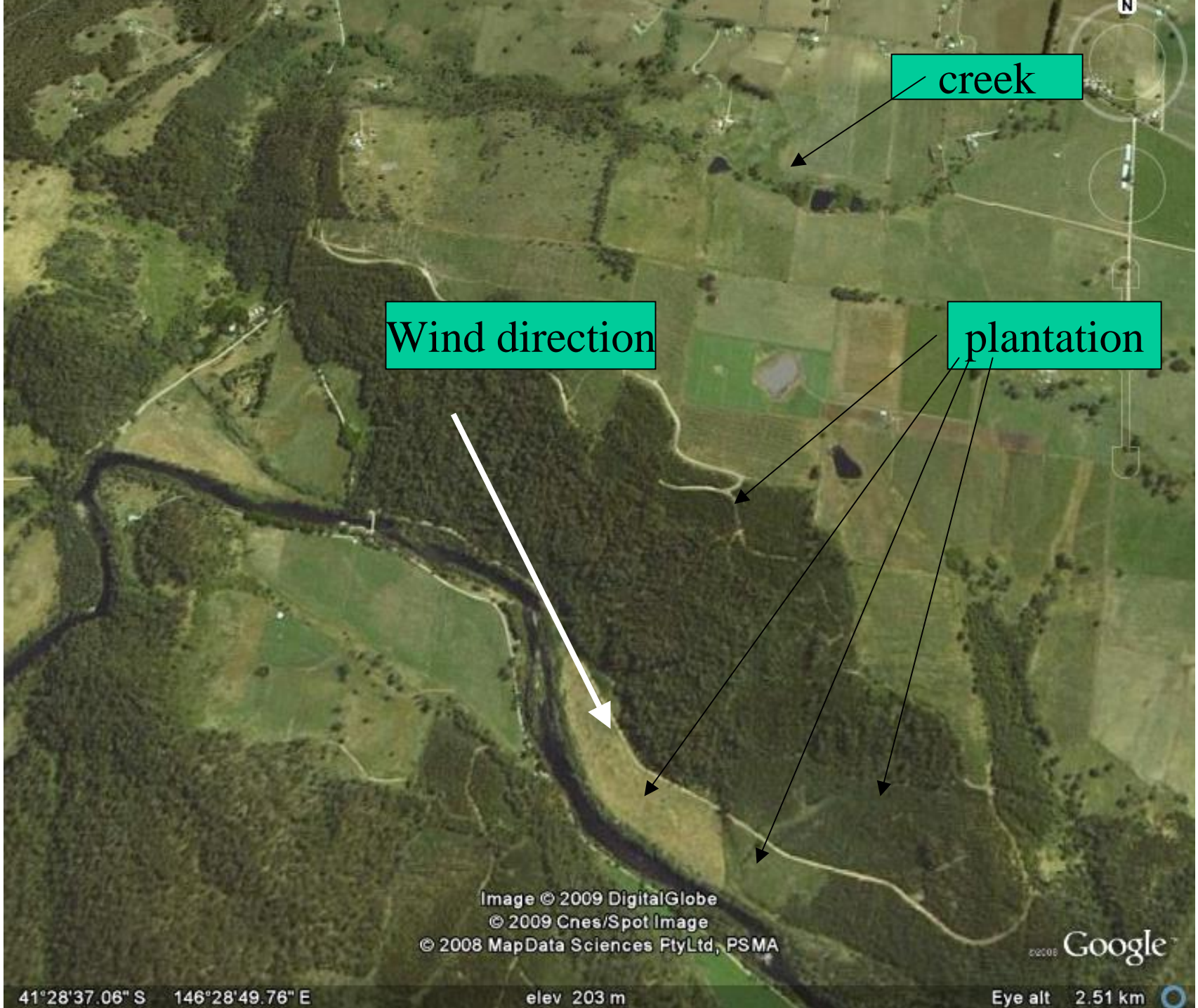
Symptoms of Poisoning with Pyrethroid Compounds

[Find Products Containing this Chemical](#)

- Irritation of skin and eyes.
- Irritability to sound or touch, abnormal facial sensation, sensation of prickling, tingling or creeping on skin, numbness.
- Headache, dizziness, nausea, vomiting, diarrhea, excessive salivation, fatigue.
- In severe cases: fluid in the lungs and muscle twitching may develop. Seizures may occur and are more common with more toxic cyano-pyrethroids.

Source for Group Symptoms: [Recognition and Management of Pesticide Poisoning, 5th edition, U.S. EPA, Chapter 8.](#)





creek

Wind direction

plantation

Image © 2009 DigitalGlobe

© 2009 Cnes/Spot Image

© 2008 MapData Sciences PtyLtd, PSMA

Google

41°28'37.06" S 146°28'49.76" E

elev 203 m

Eye alt 2.51 km