

Friday, 23 January 2009  
The Editor  
Mr L Tuffin  
Tas Times

Dear Sir,

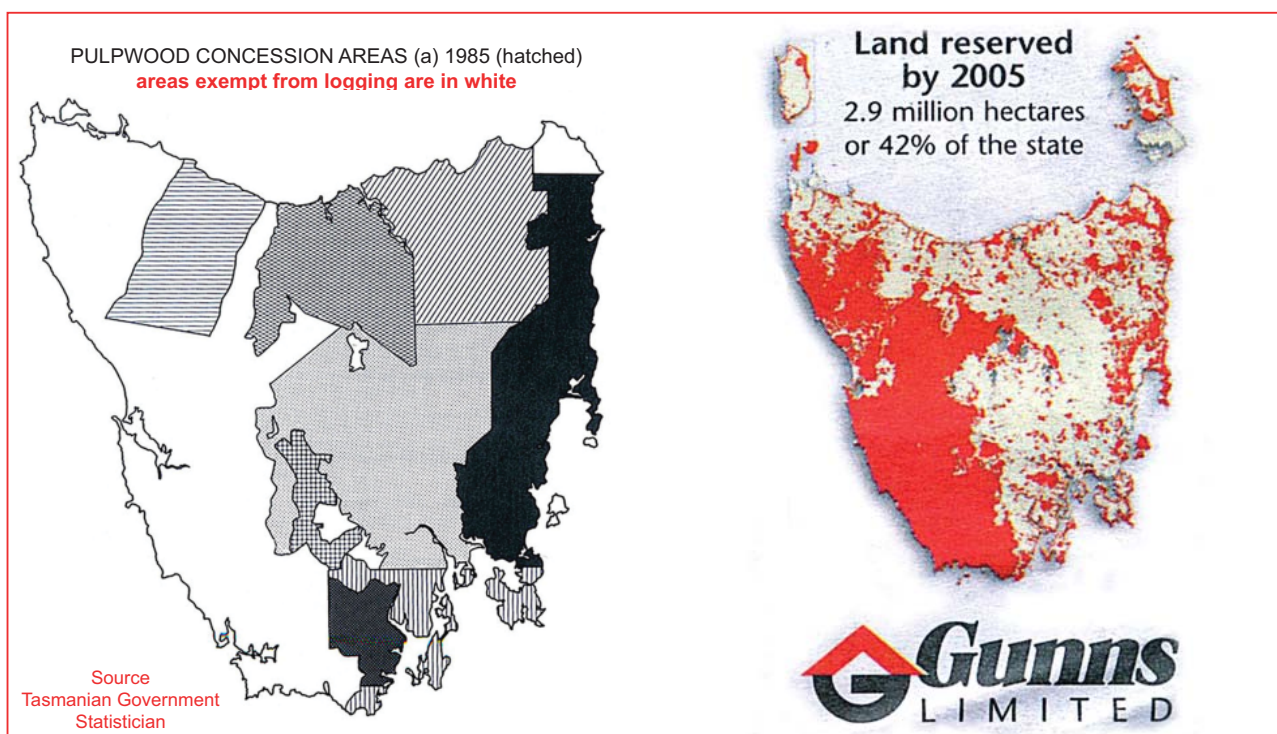
Here is a challenge for you Dr Amos, try this for size and lets see if the doctor is on spin. The Government Statistician supplied the following facts in 1985 and Gunns supplied an extra map in 2007. When the going got tough the Government Forestry statistics were no longer published, they were incriminating to Forestry Tasmania and I suggest the spin line you are pushing.

The key is productive areas, NOT reserved land. There were, in 1985, 2,214,000 hectares of commercial quality timber that covered 32% of the state over which pulp wood concessions of 1,937,000 hectares were given, leaving 277,000 hectares of commercial quality cover exempt from logging for pulpwood. This area of 277,000 hectares is now the battleground. The rest in white was either unloggable, inaccessible, above the tree line, or the trees are unsuitable for the pulp industry and as can be seen this comprises approximately half of Tasmania.

- The Tasmanian Year Book for 1985 produced by the Tasmanian Government Statistician - "Native Forests of potentially commercial quality cover 2,214,000 hectares or 32% of the State, of this area 905,000 hectares are privately owned and 1,309,000 hectares are Crown owned commercial forests."

- The map below shows the 1985 pulp wood concession areas totalling 1,937,000 hectares. Compare the area in white, excluded from the pulpwood concession with the forest remaining in red on the Gunns map, for a comparison between 20 years of exemption and logging.

- The Gunns map below shows the remaining land areas now reserved in red. The comparison indicates what has been lost, hence the scarcity, hence the fuss, hence the Private Timber Reserves, hence the logging of the Western Tiers and hence the Tarkine as we destroy the remaining 277,000 hectares.



Dr Amos states that 75% of the OLD GROWTH FOREST is already protected from logging, he omits one word REMAINING!! Not very professional for a spin doctor.

John Hawkins - Chudleigh