

This article contains images of logging coupes that Forestry Tasmania intend to convert from Native Forest to Hardwood Plantations this financial year.

The coupe data was taken from the 2010-13 Forestry Tasmania Three Year Plan.

Forestry Tasmania claim that they are only finishing off conversions that were begun before the end of December 2006.

What “already begun” means is pretty open.

As you can see from the images they don’t look like they have been started before the cut off dates.

In the current world market it is a strange thing to do to continue to put in new woodchip plantations.

Surely it is easy to change their minds and re plant these sites to mixed native forest instead.

I have a few past three year plans and have referred to them when I have found the coupes in the earlier plans.

Pete Godfrey

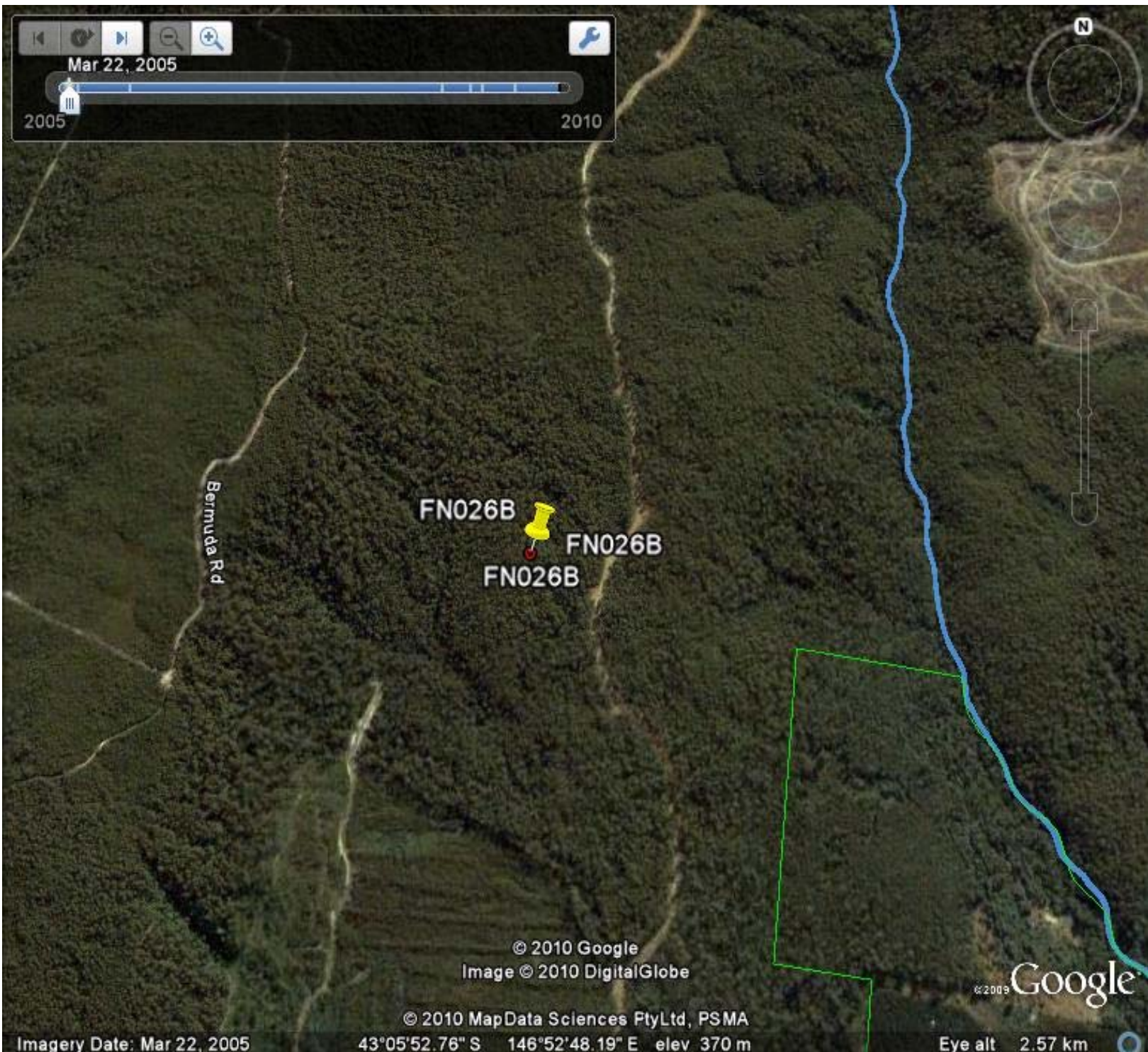
Disclaimer from FT’s three year plan.

** Note that on the 1st June 2007 Forestry Tasmania announced an end to the broad scale conversion of State-owned native forests to plantations. Only native forest coupes that had commenced harvesting prior to the end of 2006 have been listed for conversion to plantation in this plan. In addition, this category also applies to softwood plantations that are being converted to hardwood plantations.*

Huon District Coupe FN026B
25 Ha State Forest to be converted to Hardwood Plantation
In 2010/11 year

This coupe was in the following three year plans
2009-12 to be logged in 2010/11
2010-13 to be logged in 2010/11
Future Use 1 convert to hardwood plantation
Future use 2 return to native forest

Image Date 22nd March 2005



Huon District Coupe FN026B

25 Ha State Forest to be converted to Hardwood Plantation in the 2010/11 year

This coupe was in the following three year plans

2009-12 to be logged in 2010/11

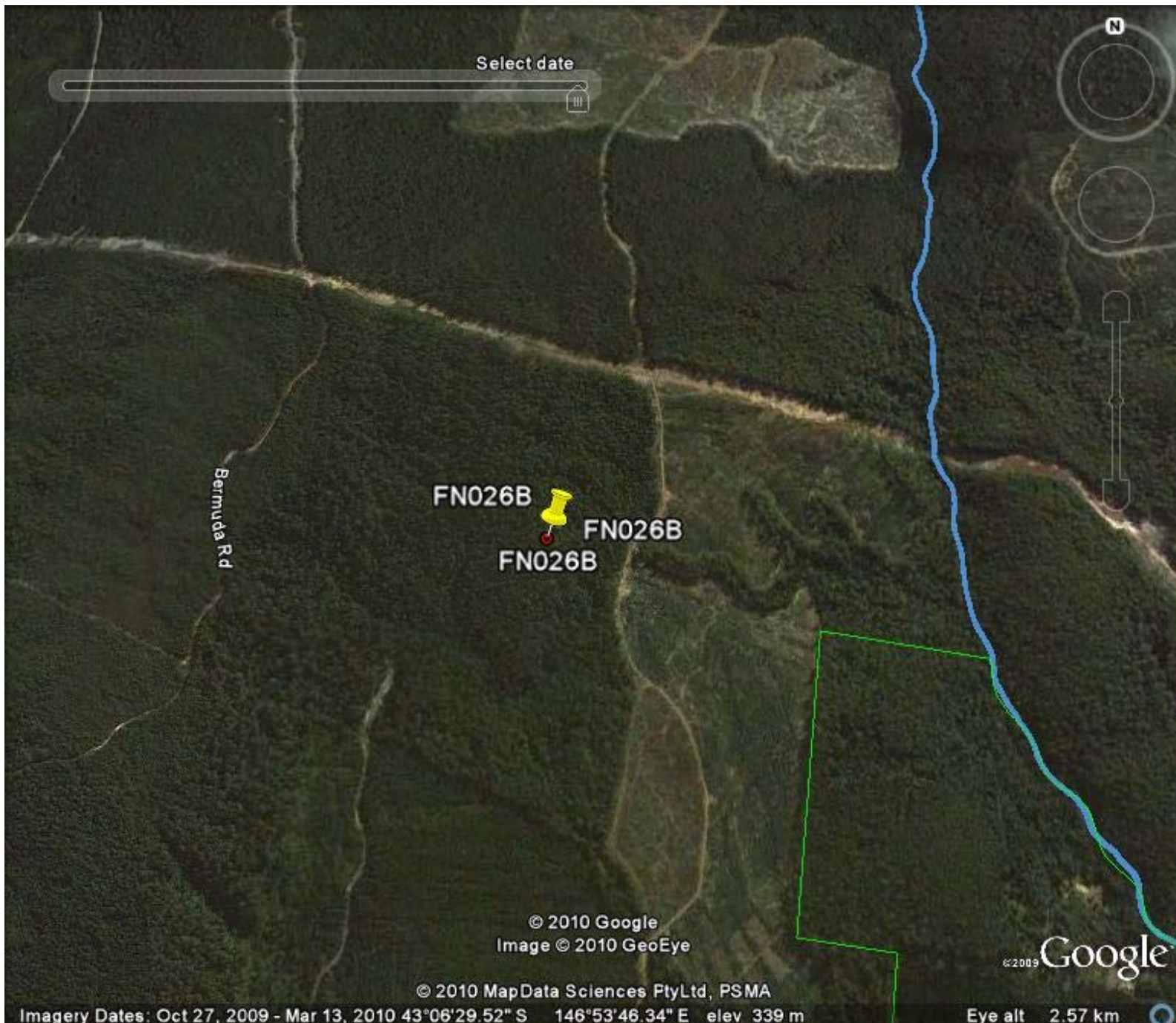
2010-13 to be logged in 2010/11

Future Use 1 convert to hardwood plantation

Future use 2 return to native forest

Image Date 27th October 2009

The roads are in but no harvesting yet.



Derwent District Coupe
FO006C 35 ha Contingency Coupe
Early Clearfell of Native Forest
Future Use State to be Forest Converted to Hardwood Plantation
in the 2010/11 year

In the 2007/10 three year plan it was to be logged in 2007/8 it was a 93 ha coupe
In the 2009-12 three year plan it was to be logged in 2009/10 and was a 35 ha coupe
Future use 1 State forest to be converted to hardwood plantation
Future use 2 Return to native forest

Image Date 18th November 2009



Derwent District Coupe
FO006C 35 ha Contingency Coupe
Early Clearfell of Native Forest
Future Use State Forest to be Converted to Hardwood Plantation
in the 2010/11 year

In the 2007/10 three year plan it was to be logged in 2007/8 it was a 93 ha coupe
In the 2009-12 three year plan it was to be logged in 2009/10 and was a 35 ha coupe
Future use 1 State forest to be converted to hardwood plantation
Future use 2 Return to native forest

Image Date 8th February 2010



Mersey District Coupe
KA006H 7 ha

Three year plan for 2010-13 this coupe is to be logged in the 2010/11

In the 2009-12 three year plan this coupe was to be logged in 2009/10

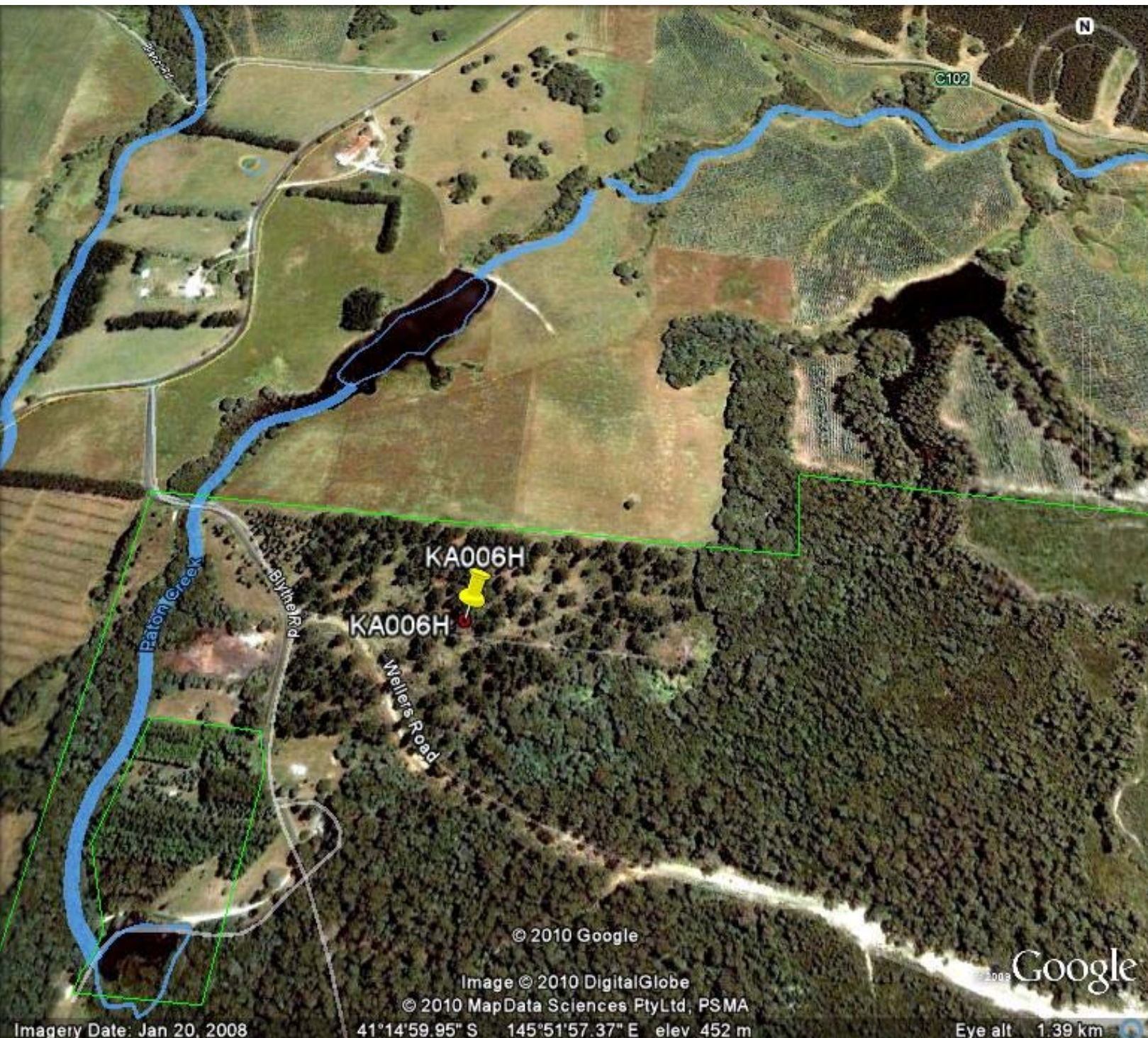
Future use 1 State forest to be converted to hardwood plantation

Future use 2 in the 2009-12 three year plan state forest converted to hardwood plantation

Future use 2 in the 2010-13 three year plan Return to Native Forest

I can't tell what the trees are this could be an old pine plantation being converted to
hardwood plantation.

Image Date 20th January 2008



Huon Coupe KD043C

6 ha Native forest to be converted to Hardwood Plantation

2010/13 three year plan this coupe to be logged in 2010/11

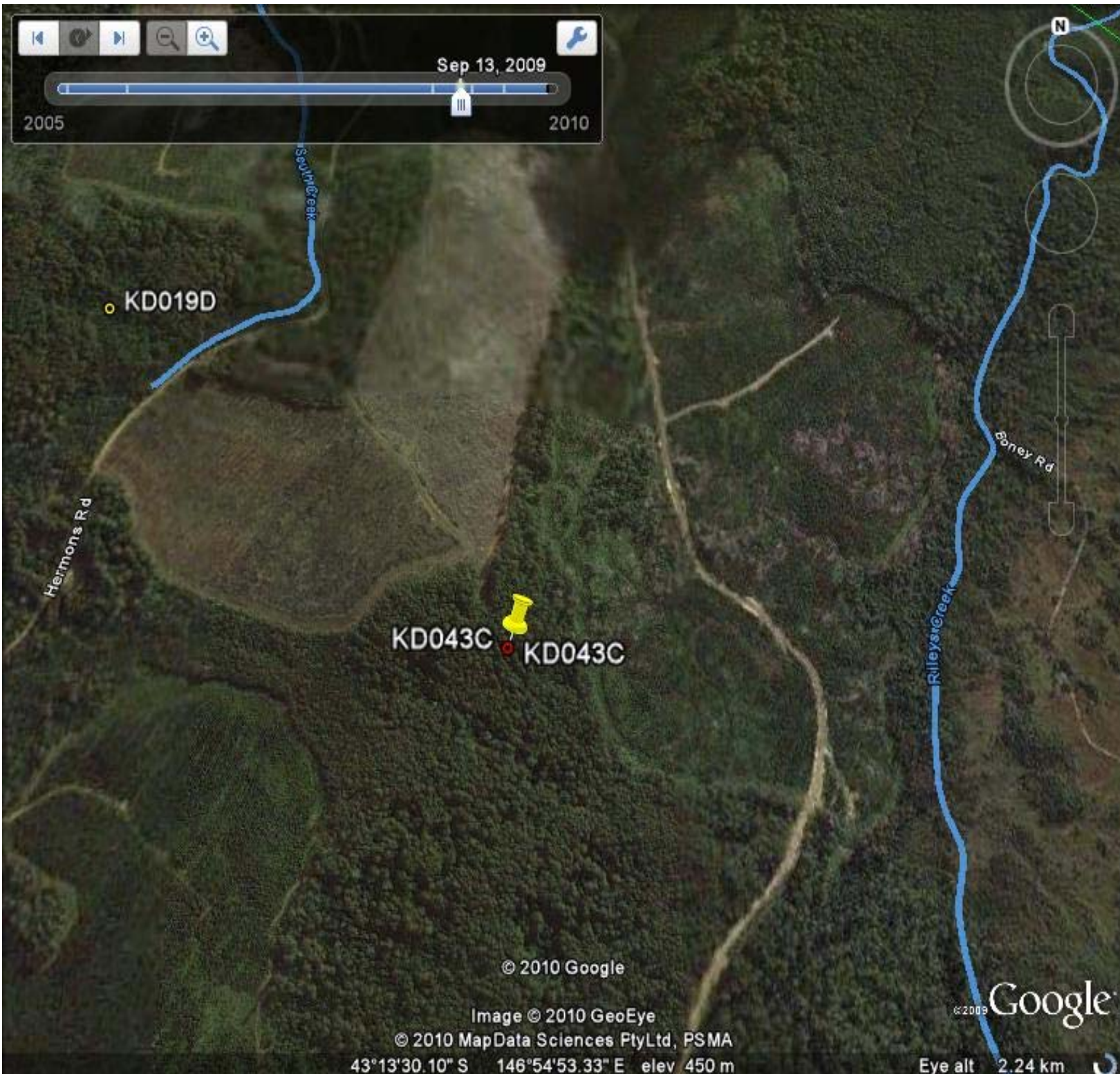
In the 2007-10 three year plan this coupe is to be logged in 2007/08 it is either 24 or 26 ha in that plan

In the 2009-12 three year plan the coupe is to be logged in 2010/11 and is back to 6 ha

Future use 1 is State forest to be converted to hardwood plantation

Future use 2 is Return to Native Forest

Image Date 13th September 2009



Huon Coupe KD043C

6 ha Native forest to be converted to Hardwood Plantation

2010/13 three year plan this coupe to be logged in 2010/11

In the 2007-10 three year plan this coupe is to be logged in 2007/08 it is either 24 or 26 ha in that plan

In the 2009-12 three year plan the coupe is to be logged in 2010/11 and is back to 6 ha

Future use 1 is State forest to be converted to hardwood plantation

Future use 2 is Return to Native Forest

Image Date 24th November 2005



Bass Coupe RR186G

35 ha State Forest to be Converted to Hardwood Plantation
in the 2010/13 three year plan it is to be logged in 2010/11

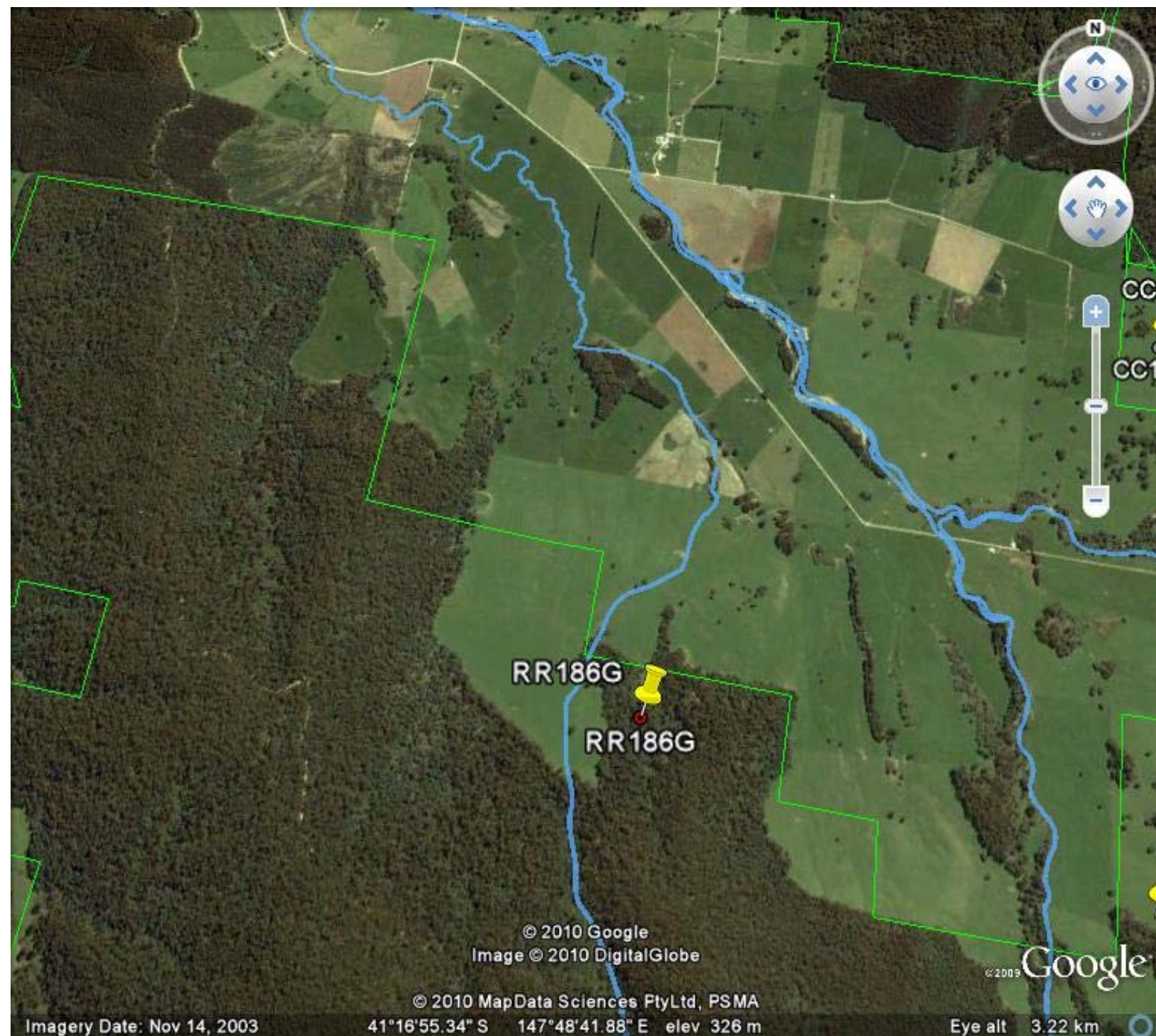
This coupe was in the 2003/06 Three year plan to be logged in 2004/05 it was only 20 ha then but was slated for clearfell and conversion to a hardwood plantation

It was also in the 2007 to 2010 three year plan to be logged in 2007/8 year and converted to plantation

It was in the 2009/12 three year plan as a contingency coupe of 0 ha.

Future use 1 and 2 in the 2010/13 three year plan is Conversion to hardwood plantation

Image Date 14th November 2003



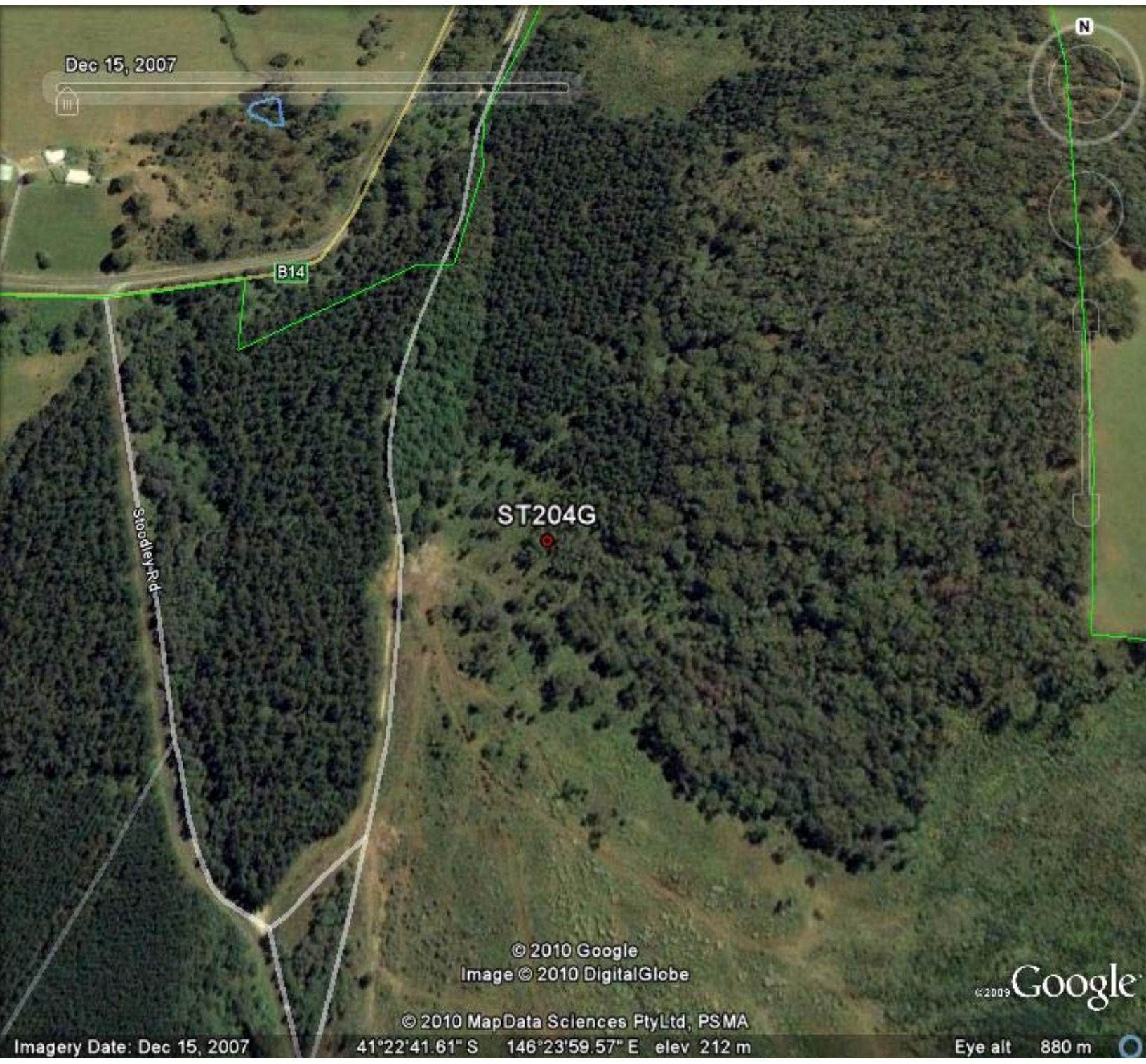
Mersey District Coupe
ST204G 12 ha State forest to be converted to Hardwood Plantation
in the 2010/11 year

Image Date 15th December 2007

Unfortunately this is the latest image available

I have only found this in the 2010-13 three year plan

There may be a possibility that the pine plantation is to be converted to
hardwood plantation depends on how accurate the GPS readings are for the coupe.



And now for the most curious one of all
CC140A is in the 2010/13 three year plan as a 10 ha contingency coupe.
It is down as State Forest to be converted to a hardwood plantation.

In the 2009/12 three year plan this coupe is 0ha a contingency coupe
Future Use in both plans say it is State forest to be converted to a hardwood plantation
This may be the only legitimate conversion coupe to be done this year.

Image date 14th November 2003

