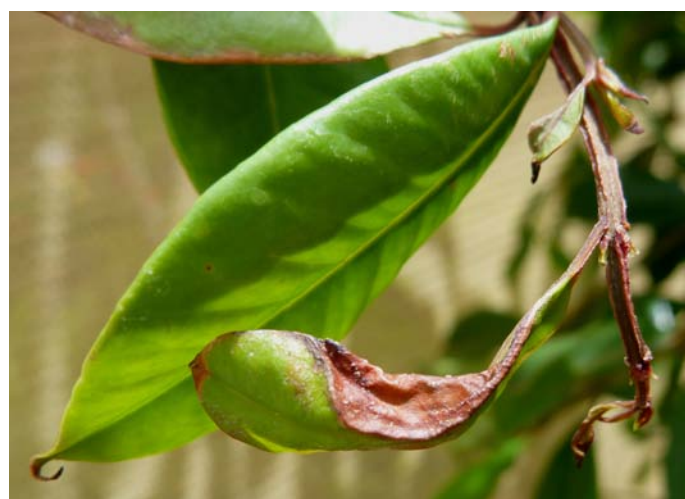


## Lilly pilly



Symptoms of myrtle rust on lilly pillys: top left *Acmena smithii*; others *Syzygium australe*.

For more information on myrtle rust, visit the DPI website [www.dpi.vic.gov.au/myrtlerust](http://www.dpi.vic.gov.au/myrtlerust)

Authorised by the Victorian Government, 1 Spring Street, Melbourne 3000

**Disclaimer:**  
This publication may be of assistance to you but the State of Victoria and its employees do not guarantee that the publication is without flaw of any kind or is wholly appropriate for your particular purposes and therefore disclaims all liability for any error, loss or other consequence which may arise from you relying on any information in this publication.

For more information about DPI go to [www.dpi.vic.gov.au](http://www.dpi.vic.gov.au) or call the Customer Call Centre on 136 186.

If you would like to receive this information/publication in an accessible format (such as large print or audio) please call the Customer Service Centre on: 136 186, TTY: 1800 122 969, or email [customer.service@dpi.vic.gov.au](mailto:customer.service@dpi.vic.gov.au)

Published by the Department of Primary Industries, Biosecurity Victoria, February 2012

© The State of Victoria, 2012

This publication is copyright. No part may be reproduced by any process except in accordance with the provisions of the Copyright Act 1968.



# Myrtle rust

Symptoms of infection found on Myrtaceae plants in Victoria  
February 2012

The myrtle rust symptoms shown were observed during investigations by DPI following Victoria's first detection of myrtle rust in December 2011. The front cover image shows lemon-scented myrtle (*Backhousia citriodora*).

### Lophomyrtus (*Lophomyrtus x ralphii*)



Myrtle rust symptoms on *Lophomyrtus x ralphii*: right, Little Star; others, Black Stallion.

**If you think you have found myrtle rust,** contact DPI on **1800 084 881** or email electronic photos of the suspect material to [plant.protection@dpi.vic.gov.au](mailto:plant.protection@dpi.vic.gov.au), together with a contact phone number.

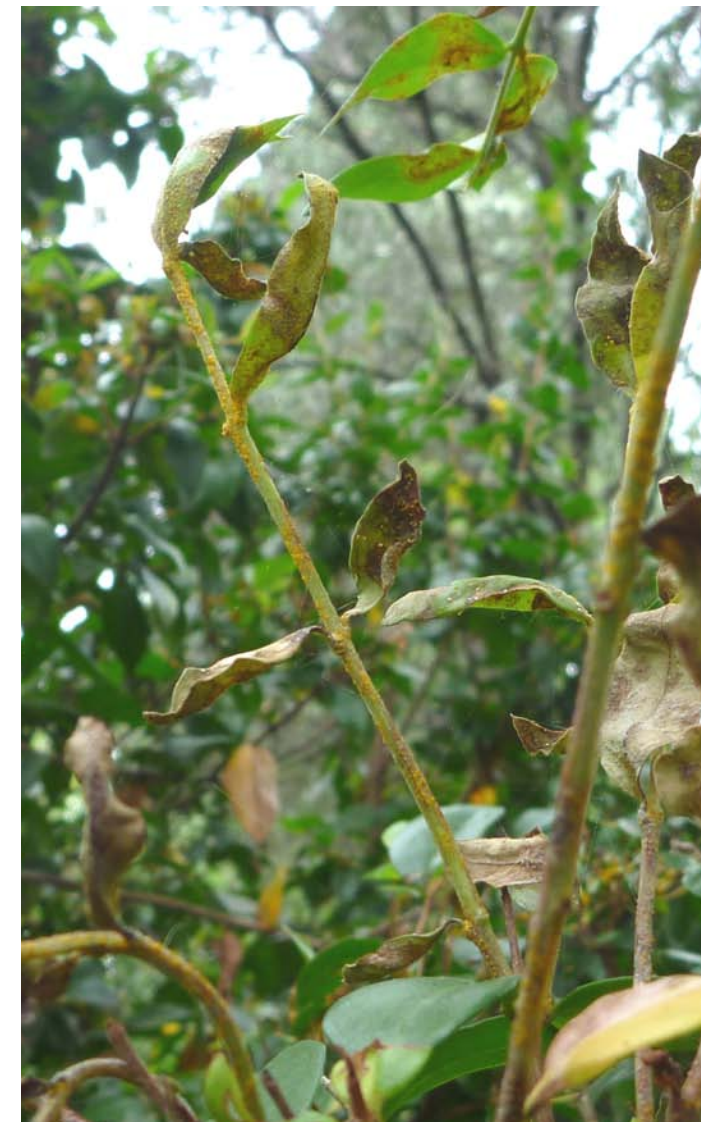
**To avoid spreading the disease, do not touch, move or collect samples of the suspect material.**



### Fiji Christmas bush (*Metrosideros collina*)



### Common myrtle (*Myrtus communis*)



### Willow myrtle (*Agonis flexuosa*)

