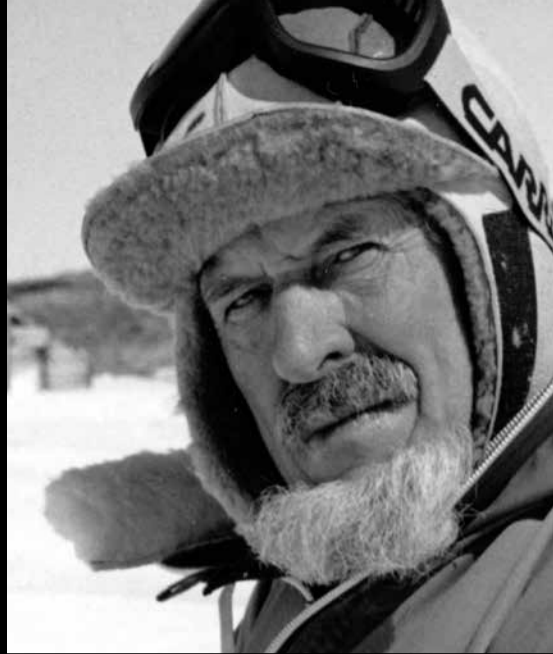


HEADING SOUTH

A NEW LIMITED EDITION PORTFOLIO
BY STEPHEN WALKER



"Heading South" is a coffee table portfolio of works in various mediums, cataloging Stephen's insight into Hobart's link with the Southern Ocean and Antarctic exploration from 1840 to the present day. The images are supplemented with vignettes and text detailing Stephen's personal experiences and knowledge drawn from his keen ongoing interest in this region.

