

The pictures that follow in this show were taken on the 19th December 2010.

All this when there was no market for the woodchips

The coupes are in the Little Fisher and Fisher River area near the Dublin Plains.

Which is to the East of Lake Rowallan and Lake Parangana.

There has been extensive damage to the forest surrounding both coupes from escaped high intensity burns and also to streamside reserves within one coupe in particular.

The First series of photos are from a Gunns Ltd Operation

Coupe CR154V

The second series are from an unknown operator Forest Practices Plan JRM0010.



TAMAR



THIS PROTECTIVE EQUIPMENT
MUST BE WORN

OPERATION No.

G 16619

COUPE

CR 154 V

CATEGORY

13

HIGH QUAL.

15

LOW QUAL.

U.H.F. CHANNEL

EMP No.

52

PH. RECEPTION

Y

JCT MAGGS RD & MERSEY FOREST RD.

Scott Signs



Coupe CR154V from a distance note the areas burnt outside the coupe



Looking south along the coupe CR154V

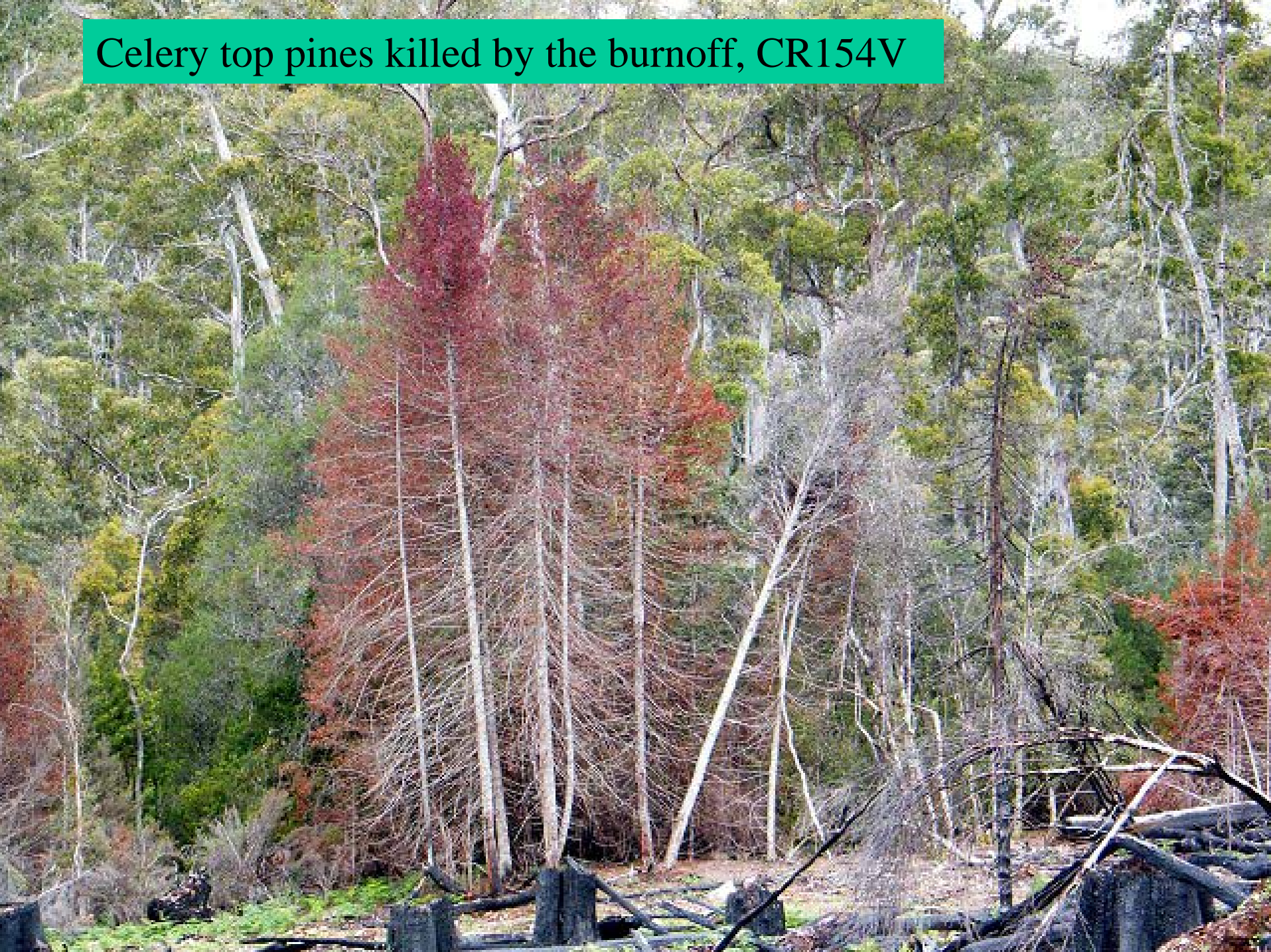


Steep slopes of the Cable Logged coupe CR154V



Not enough care in preparation meant that many celery top pines on the boundary were damaged by fire, What a waste of valuable resources

Celery top pines killed by the burnoff, CR154V



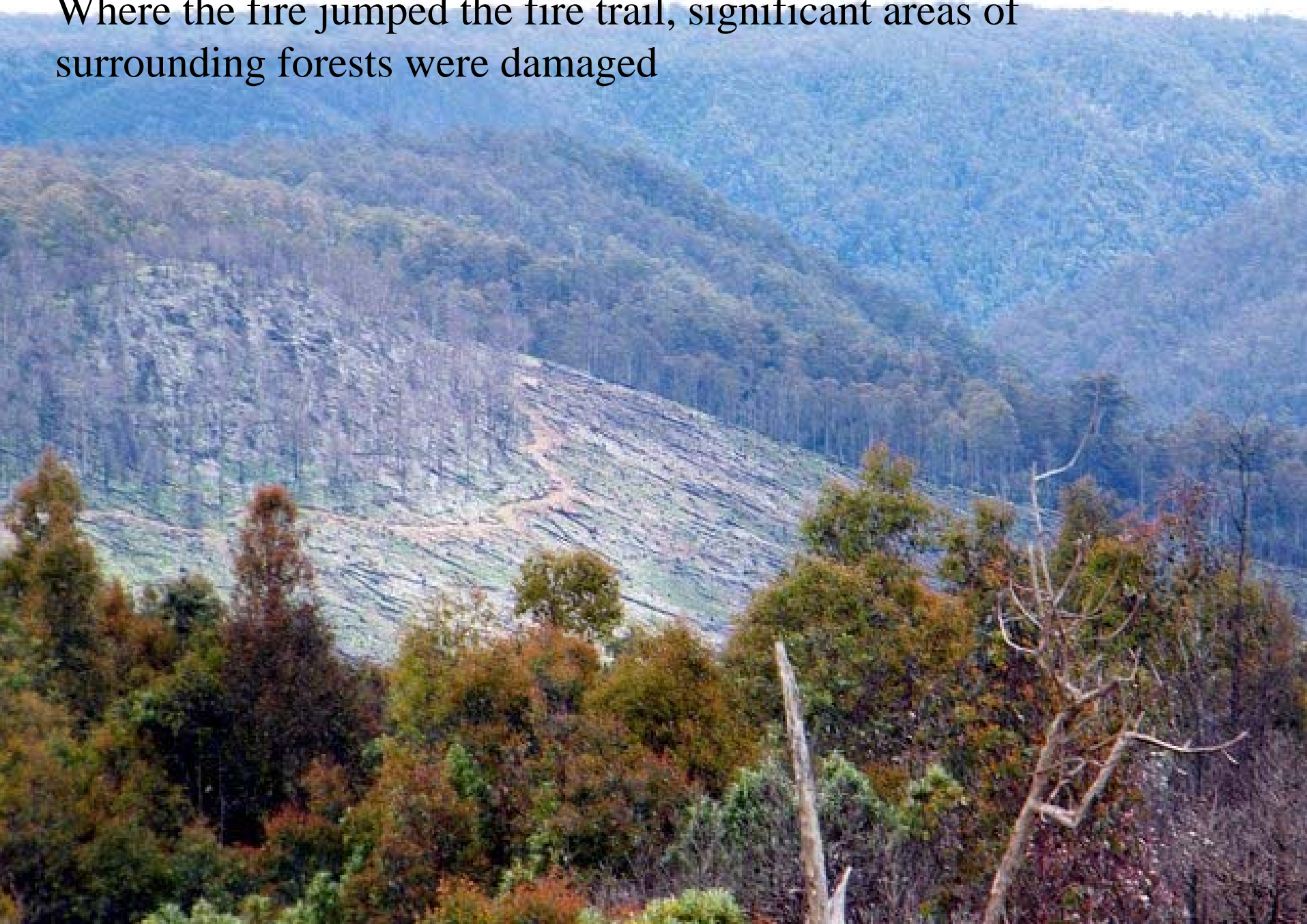


This track is channeling water away from it's natural path and causing erosion near the landing below

Why do all this damage when there was no market for the product



Where the fire jumped the fire trail, significant areas of surrounding forests were damaged



Damaged areas outside coupe boundaries CR154V



Little Fisher River Road Coupe FPP no JRM0010

- This coupe is surrounded by mixed forest. The eucalypts are mainly old and large with rainforest making up the rest of the forest.
- The coupe logged then a high intensity burn was conducted
- The burn damaged the streamside reserves and surrounding forest to a significant degree.



○ CR 156Y

CR 156W ○ CR 156W

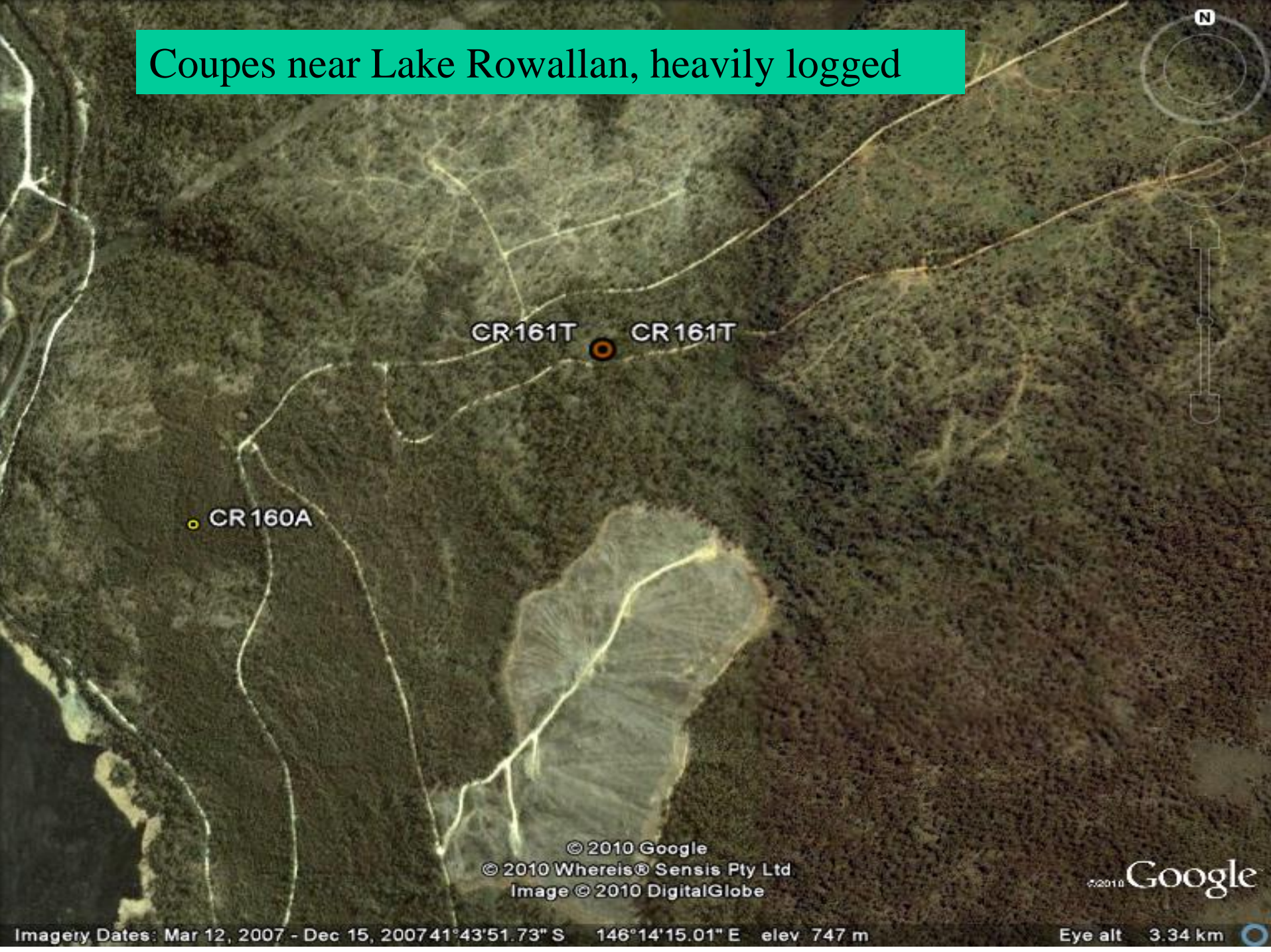
CR 156U ○ CR 156U



© 2010 Google
© 2010 Whereis® Sensis Pty Ltd
Image © 2010 DigitalGlobe

© 2010 Google

Coupes near Lake Rowallan, heavily logged



CR160A

CR161T

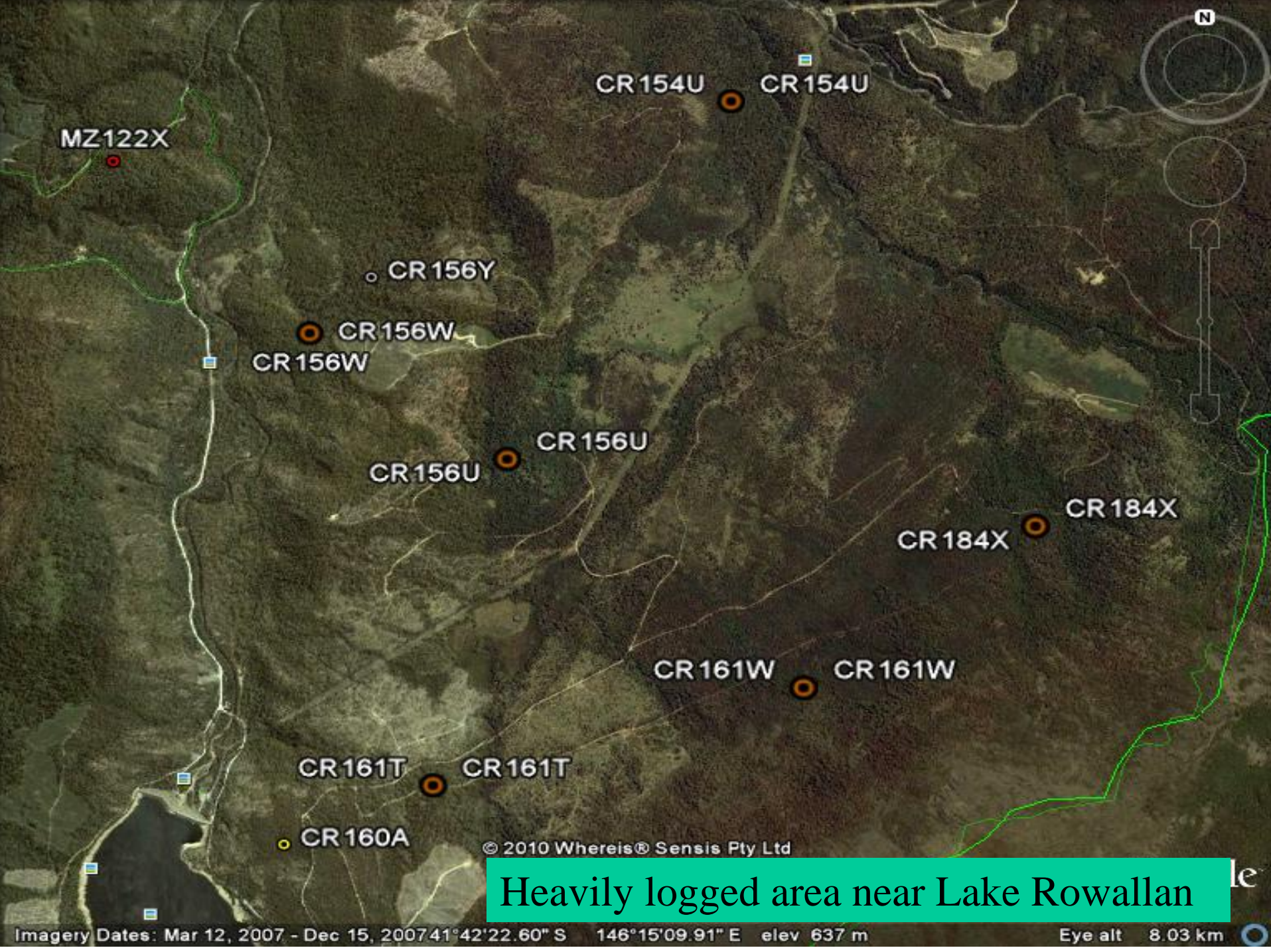
CR161T

© 2010 Google

© 2010 Whereis® Sensis Pty Ltd

Image © 2010 DigitalGlobe

©2010 Google



MZ122X

CR154U

CR154U

CR156Y

CR156W

CR156W

CR156U

CR156U

CR184X

CR184X

CR161W

CR161W

CR161T

CR161T

CR160A

© 2010 Whereis® Sensis Pty Ltd

Heavily logged area near Lake Rowallan

Imagery Dates: Mar 12, 2007 - Dec 15, 2007 41°42'22.60" S 146°15'09.91" E elev 637 m

Eye alt 8.03 km

Wet areas should not have been burnt or logged





Streamside reserves trashed and burnt plus damage to surrounding forest from the high intensity burn



Vegetation in Streamside reserve between parts of the coupe

Coupe JRM0010 Fisher Bluff above

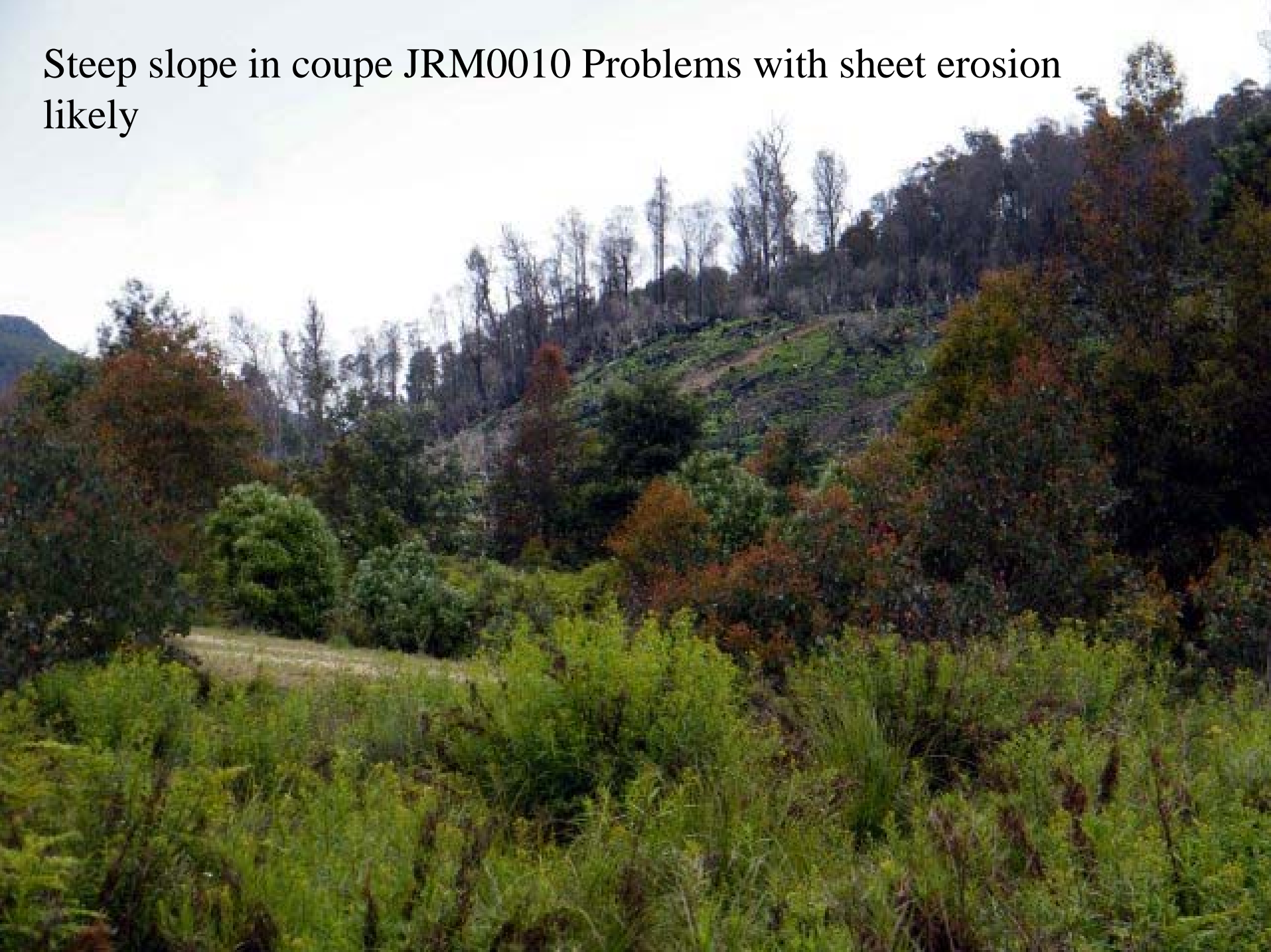




Streamside
reserve burnt



Steep slope in coupe JRM0010 Problems with sheet erosion likely





Why have SSR's plus burnt forest outside coupe

Note regrowth in foreground this area has been very heavily logged



Streamside Reserve in coupe damaged



Trees removed from within Streamside Reserve

