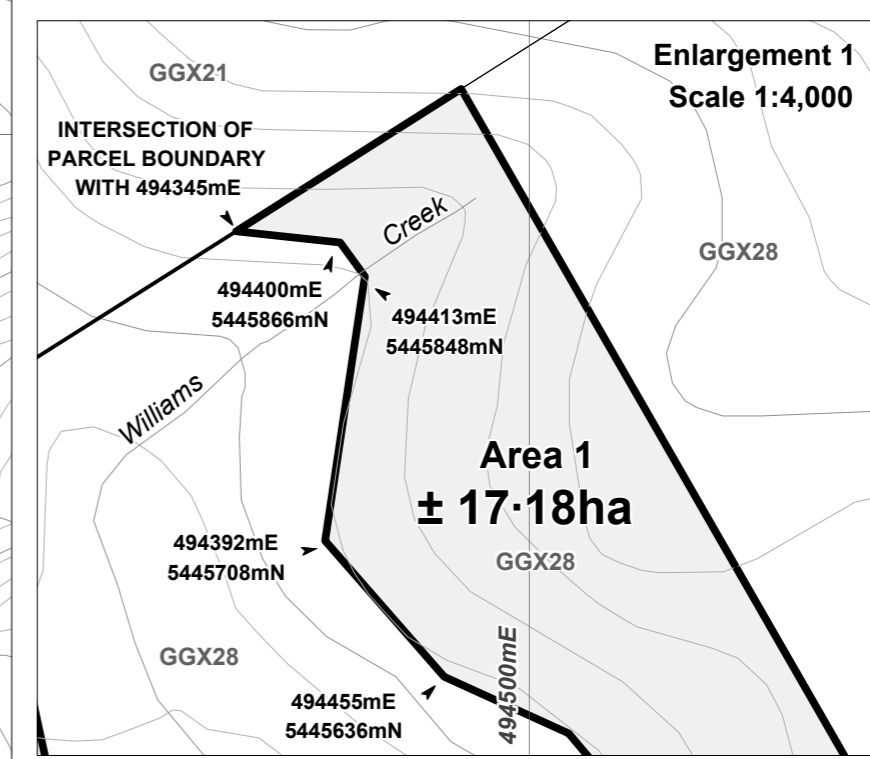
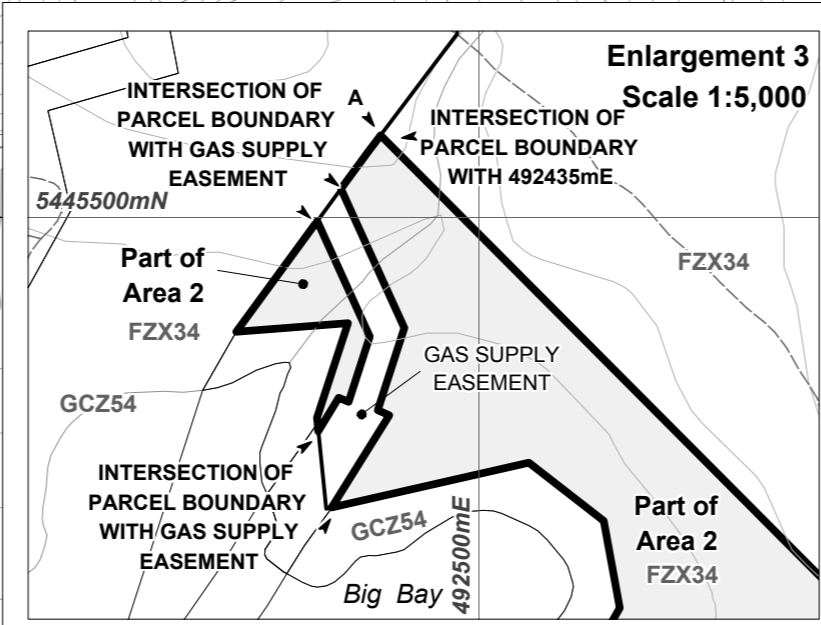


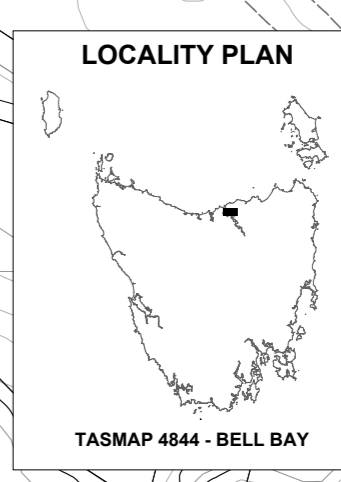
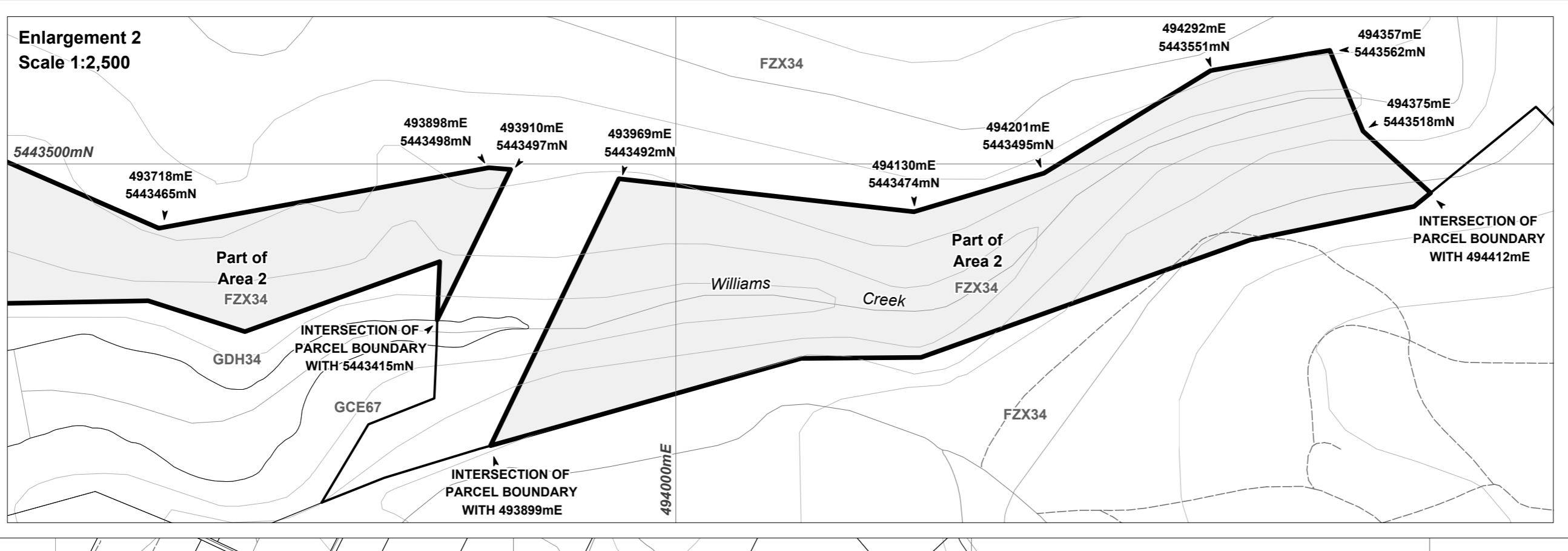
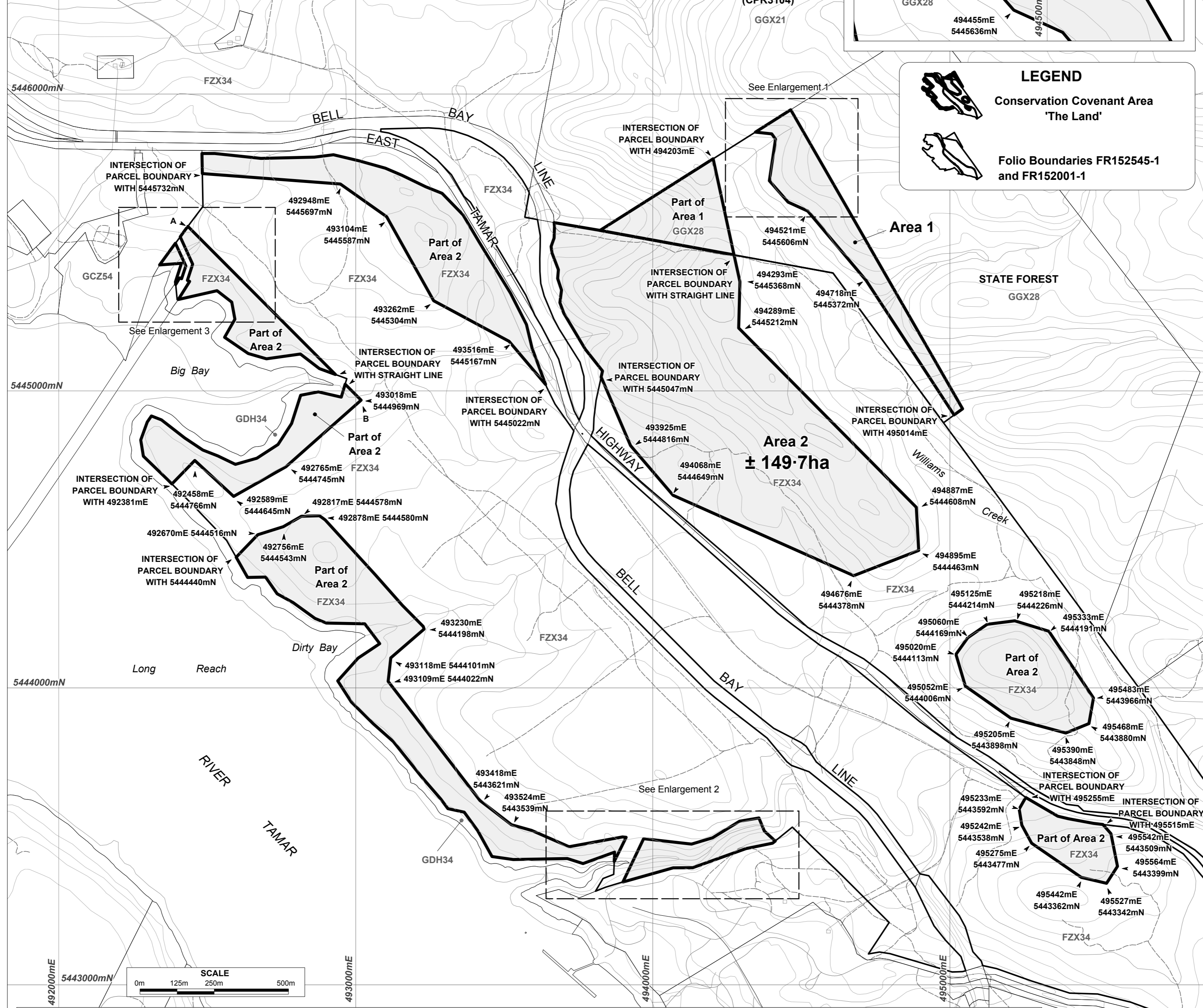
NOTE:

1. Conservation Covenant Area 1 comprises part of FR152545-1. Conservation Covenant Area 2 comprises part of FR152001-1. All boundaries of Area 1 and Area 2 are indicated by heavy black lines and their positions are defined by the accompanying descriptions.
2. All boundaries are parcel boundaries or straight lines unless otherwise described; details of individual parcel boundaries may be accessed through the Land Information System Tasmania (the LIST).
3. The Conservation Covenant Area excludes land burdened by wayleave easements.
4. The Conservation Covenant Area excludes all publicly maintained roads, or lands acquired or reserved for road purposes, regardless of whether or not such roads or road reserves are depicted on this plan.



LEGEND

- Conservation Covenant Area 'The Land'
- Folio Boundaries FR152545-1 and FR152001-1



CONSERVATION COVENANT
LOCALITIES OF LONG REACH AND GEORGE TOWN

No.	PRODUCTION / AMENDMENT	AUTHORITY	REFERENCE	DRAWN	APPROVED	DATE	SCALE
1.	PRODUCTION	RMC - PR	CIS-3559	PCD	J.G.	08-04-09	1:10,000

CENTRAL PLAN REGISTER
 Surveyor General
 Date Registered 13-07-09

CPR 8623

INFORMATION AND LAND SERVICES - DEPARTMENT OF PRIMARY INDUSTRIES, PARKS, WATER AND ENVIRONMENT

GAZETTED: STAT RULE:

